



Private Residential Living

# CONSTANTIA EDGE

81 Doordrift Road  
Deurdrift Constantia



INTRODUCING CONSTANTIA EDGE,  
AN OASIS WHERE MODERN LIVING  
EFFORTLESSLY MERGES WITH THE SERENE  
ALLURE OF NATURE.

Situated in the Southern Suburbs of Cape Town, this distinguished residential development embodies a lifestyle that seamlessly integrates urban convenience with the tranquillity of its surroundings.

Brought to market by The Tintswalo Property Group, Constantia Edge caters to families and discerning investors seeking a harmonious balance of seclusion and connectivity. Whether you're a family longing for a sanctuary or an investor eyeing a promising market, this estate presents an exceptional blend of modern design and the picturesque valley landscape.



# DEVELOPER INTRODUCTION

The development team behind Constantia Edge, Tintswalo Property Group, knows what distinguished young families and property investors want.

As a family owned- and run business founded by entrepreneurs and explorers, Ernest and Gaye Corbett in the 1970's, Tintswalo prides itself in developing valuable assets of enduring quality and integrity, while keeping their understanding of the unique South African context front and centre.

Tintswalo is Shangaan for 'the intangible feeling of love, gratitude and peace that you bestow upon someone who has given you a meaningful and worthy gift.'

It is this ethos that they have injected into the myriad of developments they helped raise off the ground, ranging from the development of retail shopping centres, medical facilities and residential complexes to boutique hotels throughout Southern Africa.



# DEVELOPMENT ELEVATIONS

## GROUND FLOOR

Vehicle & Pedestrian Entrance  
Secure Parking  
Communal Clubhouse, Braai  
Areas & Pool

## FIRST FLOOR

Apartments 1 - 11

## SECOND FLOOR

Apartments 12 - 22

## THIRD FLOOR

Apartments 23 - 33





## FOURTH FLOOR

Apartments 34 - 44



# DEVELOPMENT OVERVIEW

## APARTMENT LEGEND

-  **Unit Type 1** [2 Bed | 2 Bath]
-  **Unit Type 2** [2 Bed | 2 Bath]
-  **Unit Type 3** [3 Bed | 2 Bath]
-  **Unit Type 4** [2 Bed | 1 Bath]





# DEVELOPMENT SPECS

## DEVELOPMENT

- 24-hour security
- Access control
- Secure parking
- Communal clubhouse, braai areas and pool
- Private balconies
- High-speed fibre connectivity
- Pet friendly community

## APARTMENTS

- Vinyl flooring
- Downlights throughout
- Duco sprayed kitchen joinery
- Smeg stove top and oven
- Built-in cupboards in all bedrooms
- Engineered oak flooring
- Optional extras:
  - Premium kitchen spec
  - Engineered wood flooring
  - Air conditioning
  - Installation of back-up power system









# TYPE 01

2 BED | 2 BATH  
1 PARKING



## FIRST FLOOR

Apartment No	Internal Size	Balcony Size	Total Size	Orientation
No. 02	79m <sup>2</sup>	4m <sup>2</sup>	83m <sup>2</sup>	North
No. 03	79m <sup>2</sup>	4m <sup>2</sup>	83m <sup>2</sup>	North
No. 04	79m <sup>2</sup>	4m <sup>2</sup>	83m <sup>2</sup>	North
No. 05	79m <sup>2</sup>	4m <sup>2</sup>	83m <sup>2</sup>	North
No. 06	79m <sup>2</sup>	4m <sup>2</sup>	83m <sup>2</sup>	North
No. 09	79m <sup>2</sup>	4m <sup>2</sup>	83m <sup>2</sup>	North
No. 10	79m <sup>2</sup>	4m <sup>2</sup>	83m <sup>2</sup>	North

## SECOND FLOOR

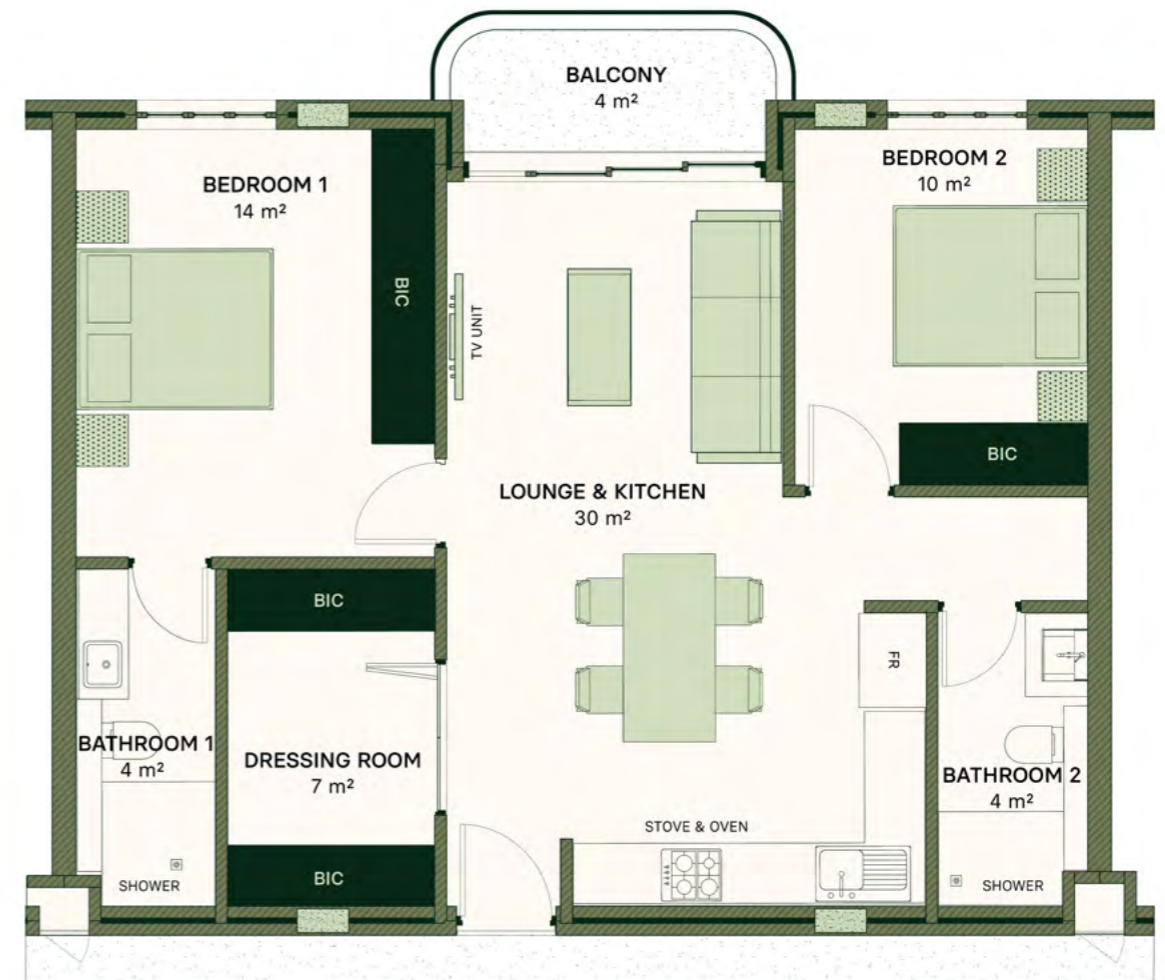
Apartment No	Internal Size	Balcony Size	Total Size	Orientation
No. 13	79m <sup>2</sup>	4m <sup>2</sup>	83m <sup>2</sup>	North
No. 14	79m <sup>2</sup>	4m <sup>2</sup>	83m <sup>2</sup>	North
No. 15	79m <sup>2</sup>	4m <sup>2</sup>	83m <sup>2</sup>	North
No. 16	79m <sup>2</sup>	4m <sup>2</sup>	83m <sup>2</sup>	North
No. 17	79m <sup>2</sup>	4m <sup>2</sup>	83m <sup>2</sup>	North
No. 20	79m <sup>2</sup>	4m <sup>2</sup>	83m <sup>2</sup>	North
No. 21	79m <sup>2</sup>	4m <sup>2</sup>	83m <sup>2</sup>	North

## FLOORS: 1-2

Back Facade Elevation



Type 1 Floorplan



# TYPE 01 Contd.

2 BED | 2 BATH  
1 PARKING



## THIRD FLOOR

Apartment No	Internal Size	Balcony Size	Total Size	Orientation
No. 24	79m <sup>2</sup>	4m <sup>2</sup>	83m <sup>2</sup>	North
No. 25	79m <sup>2</sup>	4m <sup>2</sup>	83m <sup>2</sup>	North
No. 26	79m <sup>2</sup>	4m <sup>2</sup>	83m <sup>2</sup>	North
No. 27	79m <sup>2</sup>	4m <sup>2</sup>	83m <sup>2</sup>	North
No. 28	79m <sup>2</sup>	4m <sup>2</sup>	83m <sup>2</sup>	North
No. 31	79m <sup>2</sup>	4m <sup>2</sup>	83m <sup>2</sup>	North
No. 32	79m <sup>2</sup>	4m <sup>2</sup>	83m <sup>2</sup>	North

## FOURTH FLOOR

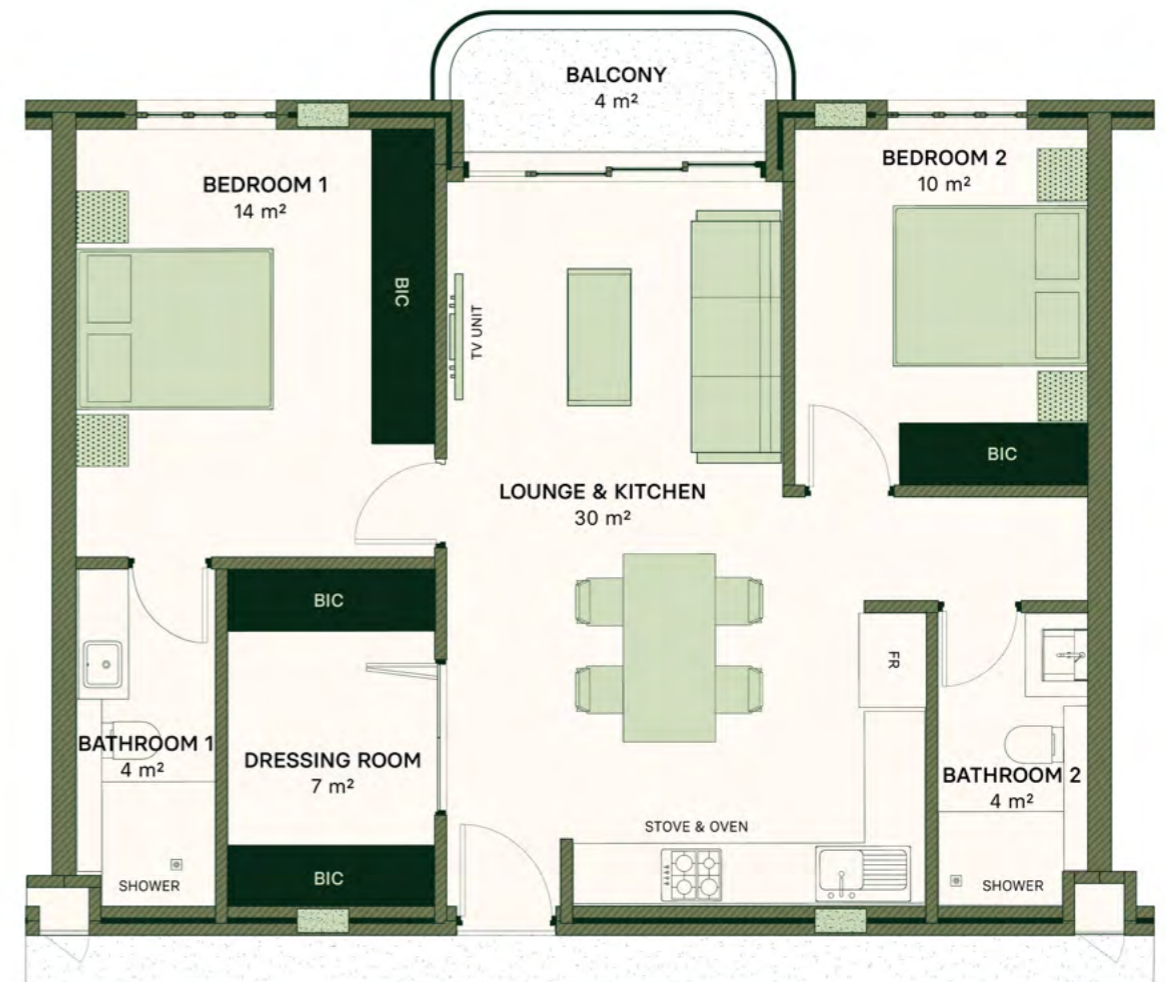
Apartment No	Internal Size	Balcony Size	Total Size	Orientation
No. 35	79m <sup>2</sup>	4m <sup>2</sup>	83m <sup>2</sup>	North
No. 36	79m <sup>2</sup>	4m <sup>2</sup>	83m <sup>2</sup>	North
No. 37	79m <sup>2</sup>	4m <sup>2</sup>	83m <sup>2</sup>	North
No. 38	79m <sup>2</sup>	4m <sup>2</sup>	83m <sup>2</sup>	North
No. 39	79m <sup>2</sup>	4m <sup>2</sup>	83m <sup>2</sup>	North
No. 42	79m <sup>2</sup>	4m <sup>2</sup>	83m <sup>2</sup>	North
No. 43	79m <sup>2</sup>	4m <sup>2</sup>	83m <sup>2</sup>	North

## FLOORS: 3-4

Back Facade Elevation



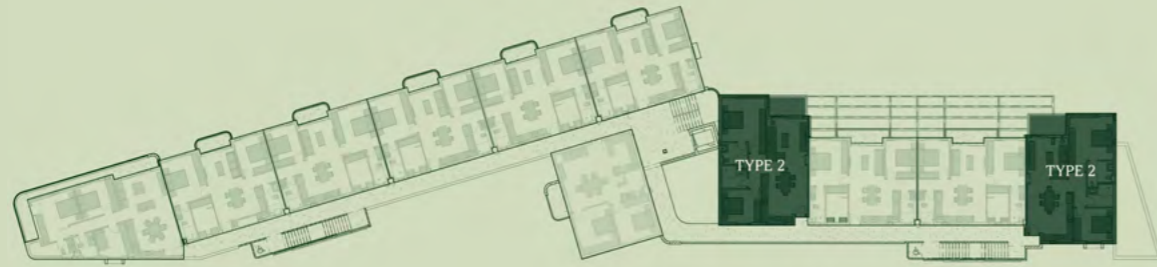
Type 1 Floorplan





# TYPE 02

2 BED | 2 BATH  
2 PARKINGS



## FIRST FLOOR

Apartment No	Internal Size	Balcony Size	Total Size	Orientation
No. 08	92m <sup>2</sup>	7m <sup>2</sup>	99m <sup>2</sup>	North
No. 11	92m <sup>2</sup>	7m <sup>2</sup>	99m <sup>2</sup>	North

## SECOND FLOOR

Apartment No	Internal Size	Balcony Size	Total Size	Orientation
No. 19	92m <sup>2</sup>	7m <sup>2</sup>	99m <sup>2</sup>	North
No. 22	92m <sup>2</sup>	7m <sup>2</sup>	99m <sup>2</sup>	North

## THIRD FLOOR

Apartment No	Internal Size	Balcony Size	Total Size	Orientation
No. 30	92m <sup>2</sup>	7m <sup>2</sup>	99m <sup>2</sup>	North
No. 33	92m <sup>2</sup>	7m <sup>2</sup>	99m <sup>2</sup>	North

## FOURTH FLOOR

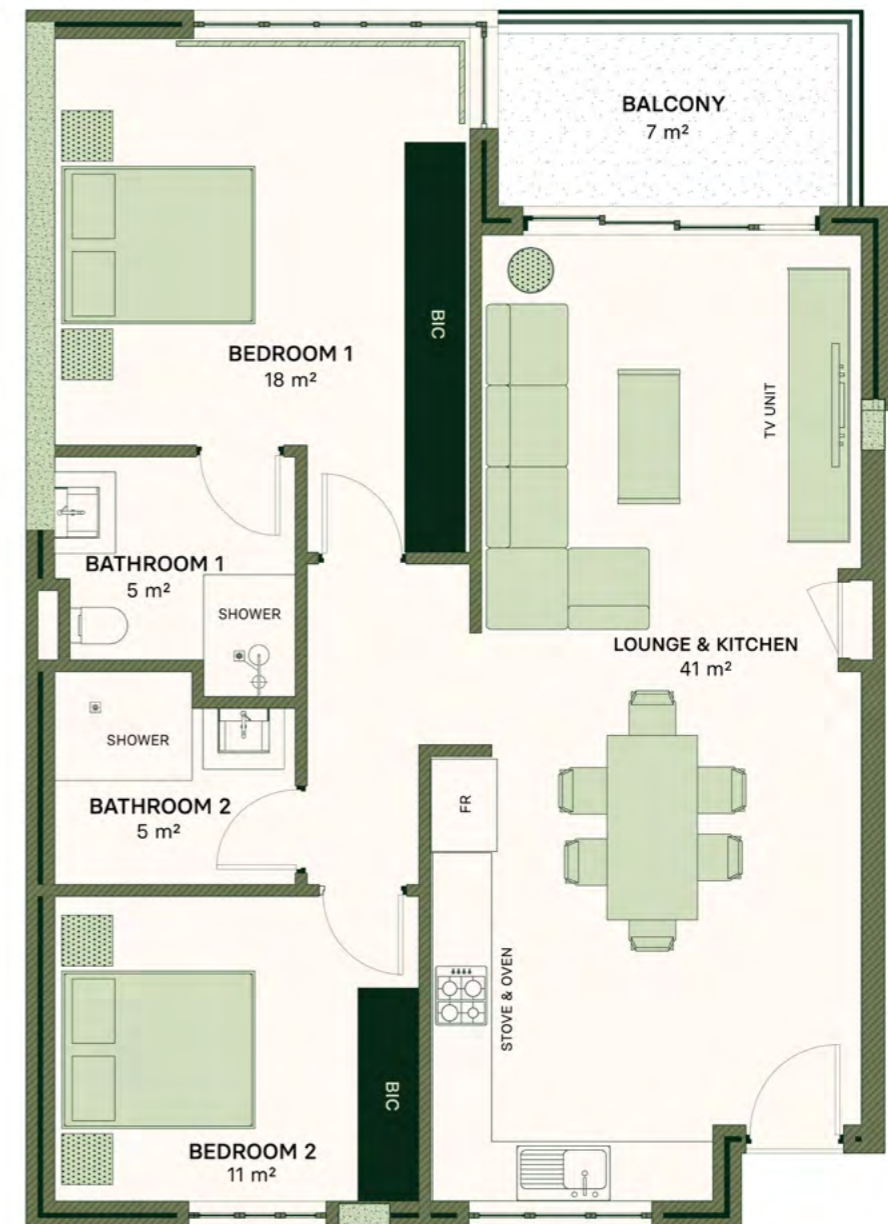
Apartment No	Internal Size	Balcony Size	Total Size	Orientation
No. 41	92m <sup>2</sup>	7m <sup>2</sup>	99m <sup>2</sup>	North
No. 44	92m <sup>2</sup>	7m <sup>2</sup>	99m <sup>2</sup>	North

## FLOORS: 1-4

Back Facade Elevation



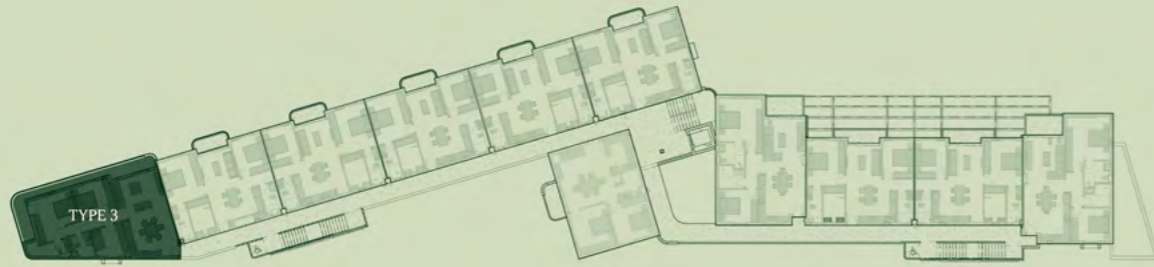
Type 2 Floorplan





# TYPE 03

3 BED | 2 BATH  
2 PARKINGS



## FLOORS: 1-4

Back Facade Elevation



### FIRST FLOOR

Apartment No	Internal Size	Balcony Size	Total Size	Orientation
No. 01	96m <sup>2</sup>	18m <sup>2</sup>	114m <sup>2</sup>	North

### SECOND FLOOR

Apartment No	Internal Size	Balcony Size	Total Size	Orientation
No. 12	96m <sup>2</sup>	18m <sup>2</sup>	114m <sup>2</sup>	North

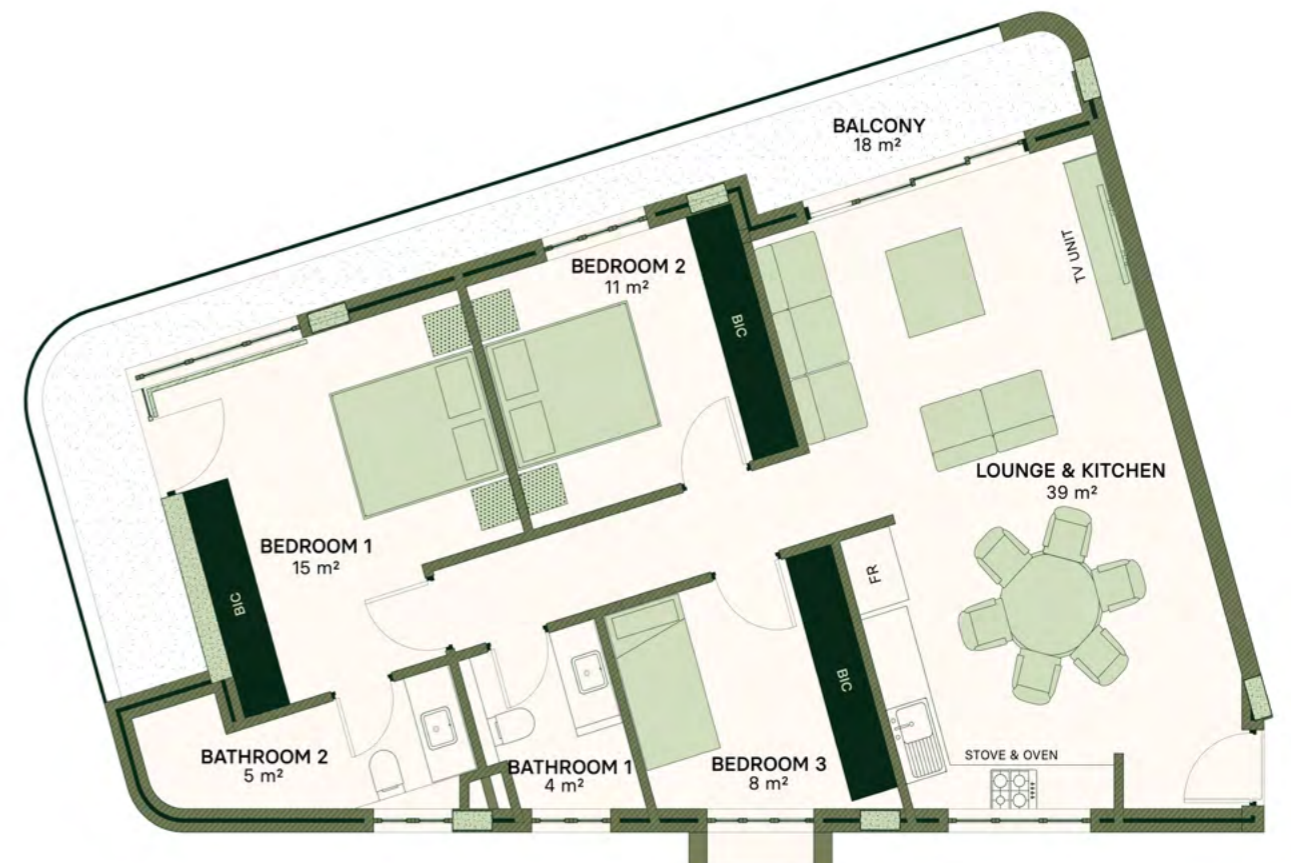
### THIRD FLOOR

Apartment No	Internal Size	Balcony Size	Total Size	Orientation
No. 23	96m <sup>2</sup>	18m <sup>2</sup>	114m <sup>2</sup>	North

### FOURTH FLOOR

Apartment No	Internal Size	Balcony Size	Total Size	Orientation
No. 34	96m <sup>2</sup>	18m <sup>2</sup>	114m <sup>2</sup>	North

Type 3 Floorplan

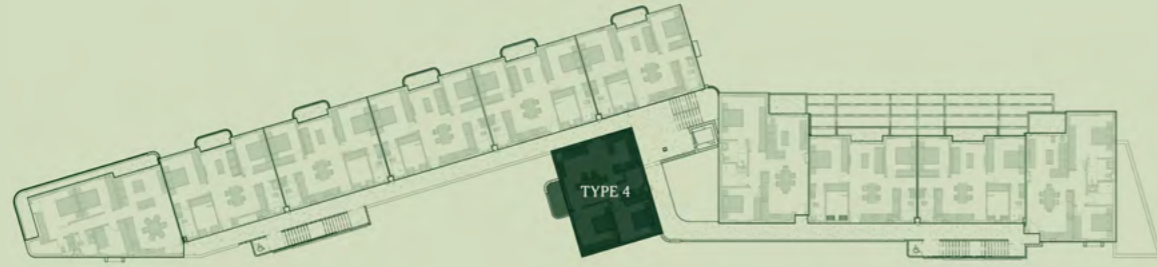






# TYPE 04

2 BED | 1 BATH  
1 PARKING



## FLOORS: 1-4

Front Facade Elevation



### FIRST FLOOR

Apartment No	Internal Size	Balcony Size	Total Size	Orientation
No. 07	79m <sup>2</sup>	5m <sup>2</sup>	84m <sup>2</sup>	Southwest

### SECOND FLOOR

Apartment No	Internal Size	Balcony Size	Total Size	Orientation
No. 18	79m <sup>2</sup>	5m <sup>2</sup>	84m <sup>2</sup>	Southwest

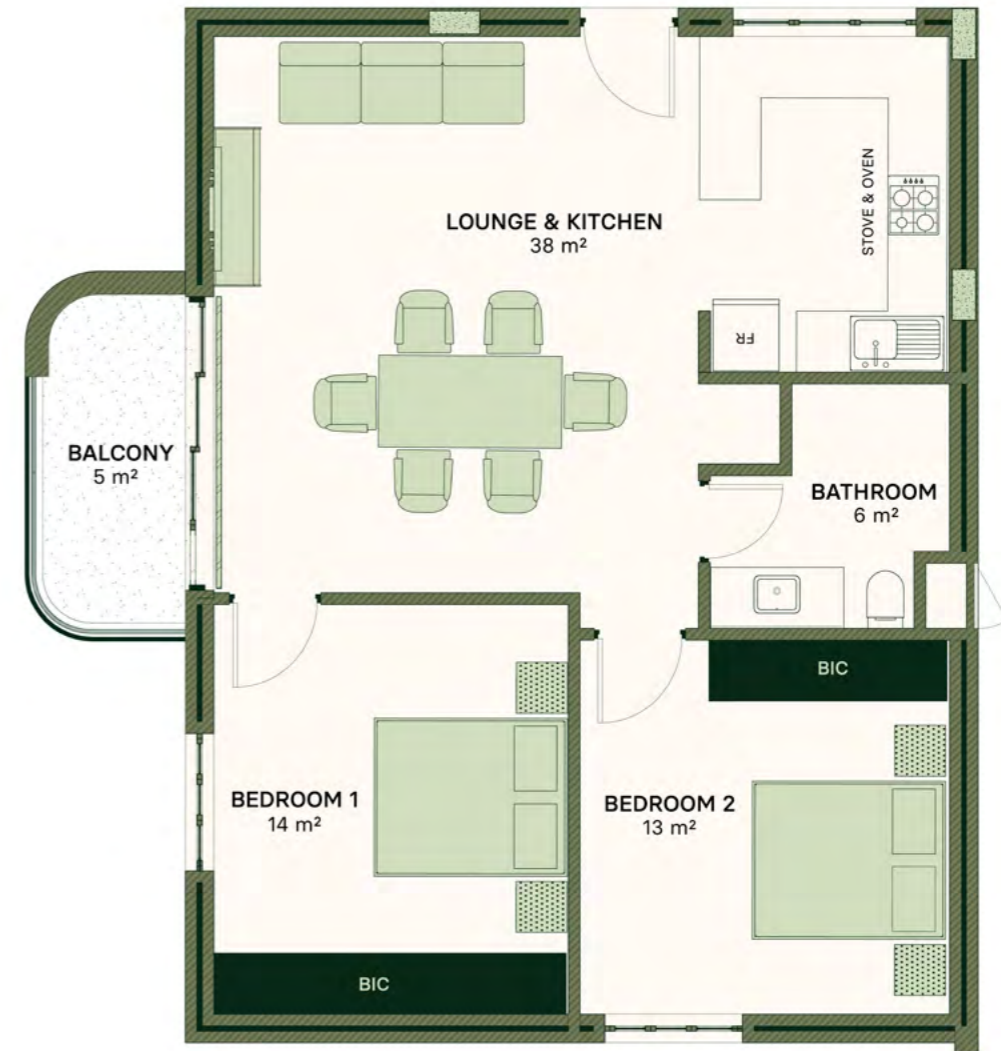
### THIRD FLOOR

Apartment No	Internal Size	Balcony Size	Total Size	Orientation
No. 29	79m <sup>2</sup>	5m <sup>2</sup>	84m <sup>2</sup>	Southwest

### FOURTH FLOOR

Apartment No	Internal Size	Balcony Size	Total Size	Orientation
No. 40	79m <sup>2</sup>	5m <sup>2</sup>	84m <sup>2</sup>	Southwest

Type 4 Floorplan



Floorplan



# NEIGHBOURHOOD

Situated in the heart of the Southern Suburbs, Constantia Edge captures a unique charm, promising an incomparable standard of living.

Renowned for its natural allure, the area features lush vineyards, a multitude of exceptional schools, and an abundance of outdoor activities including hiking, running, and cycling.

With its stunning mountain views and lush green surroundings, the Southern Suburbs sets the standard for picturesque living.

- **Vineyards and wineries:** celebrated vineyards for exceptional wine tasting.
- **Gourmet dining:** a world of fine dining with global and local flavours.
- **Retail therapy:** boutique to high-end malls, satisfying all needs.
- **Adventure outdoors:** trails, biking, and golf for the active spirit.
- **Learning hubs:** top schools and educational facilities nearby.
- **Health & wellness:** premier healthcare for complete peace of mind.





# CONTACT INFORMATION

For more information about Constantia Edge please contact:

**Nicholas Carney**

**T:** +27 81 368 9673

**E:** [constantiaedge@revo.co.za](mailto:constantiaedge@revo.co.za)

**Jason Kruger**

**T:** +27 71 706 3731

**E:** [constantiaedge@revo.co.za](mailto:constantiaedge@revo.co.za)

