



HOMESTEAD

PRIVATE MEWS ESTATE



PROSPEKT
Property Development





HOMESTEAD
PRIVATE MEWS ESTATE

HOMESTEAD EXTERIOR



All 3D visuals and marketing material are artistic representations for marketing purposes only and subject to design development. Plans, elevations, sections and specifications subject to final adjustments by architect. Areas shown on drawings are measured construction areas and may vary. Window and door quantities, positions, sizes and glazing may need to be adjusted and all are subject to compliance with SANS 204 fenestration calculations. Levels shown on drawings are indicative. All levels to be finalized on site and adjustments to plans and levels shown on marketing material may need to be made to comply with SANS 10400. All furniture, appliances, swimming pools, and vehicles indicative and not included in purchase price. All 3D visuals are shown in a mature landscape indicative for the development, actual hard and soft landscaping proposal implemented for the development may vary.



HOMESTEAD
PRIVATE MEWS ESTATE

AERIAL PERSPECTIVE

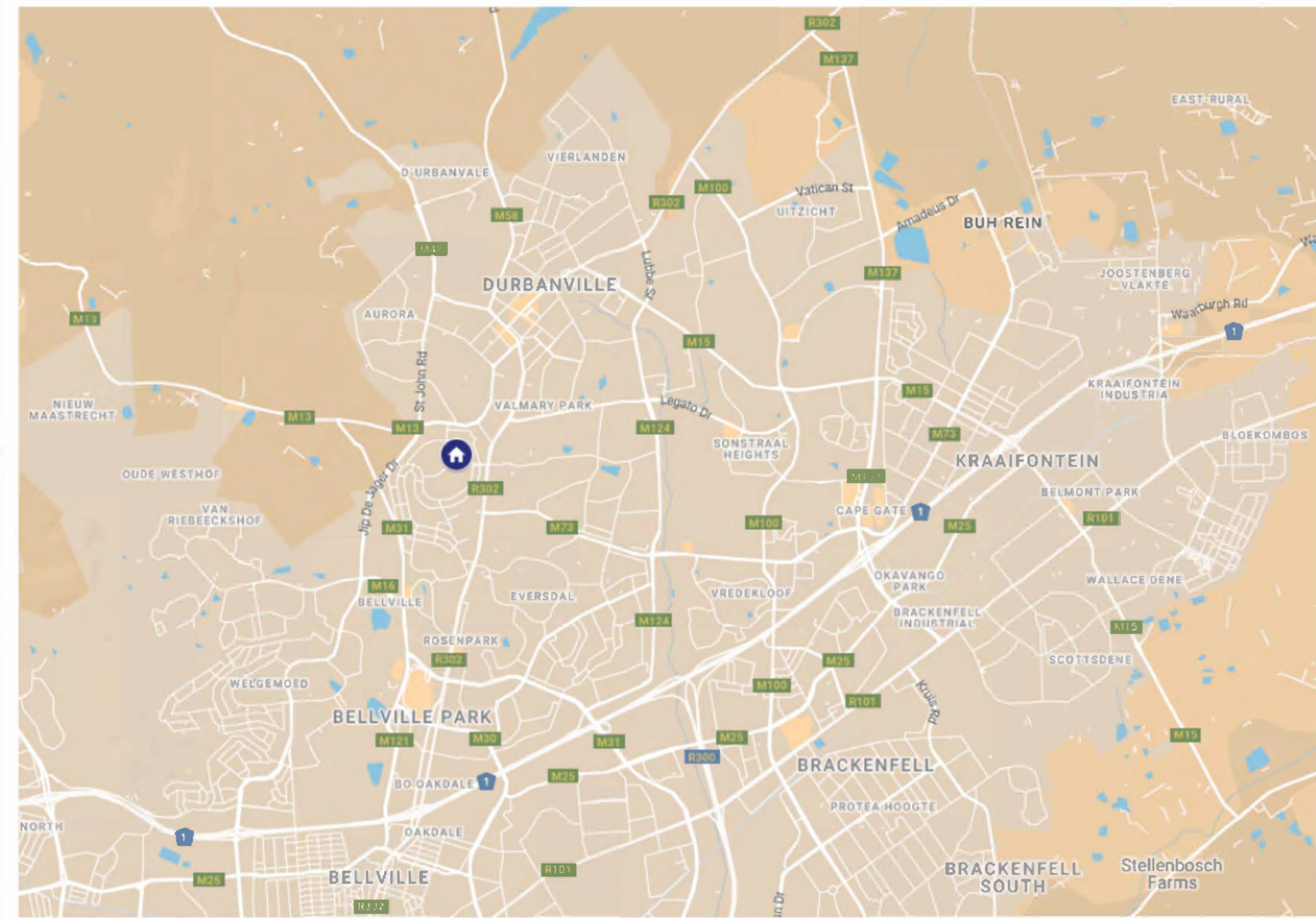


All 3D visuals and marketing material are artistic representations for marketing purposes only and subject to design development. Plans, elevations, sections and specifications subject to final adjustments by architect. Areas shown on drawings are measured construction areas and may vary. Window and door quantities, positions, sizes and glazing may need to be adjusted and all are subject to compliance with SANS 204 fenestration calculations. Levels shown on drawings are indicative. All levels to be finalized on site and adjustments to plans and levels shown on marketing material may need to be made to comply with SANS 10400. All furniture, appliances, swimming pools, and vehicles indicative and not included in purchase price. All 3D visuals are shown in a mature landscape indicative for the development, actual hard and soft landscaping proposal implemented for the development may vary.



HOMESTEAD PRIVATE MEWS ESTATE

LOCALITY



SCHOOLS

- 2.0km Durbanville Primary
- 2.5km Kenridge Primary
- 2.5km Eversdal Primary
- 2.7km Durbanville High
- 1.5km Fairmont High
- 3.5km Stellenberg High
- 4.3km Reddam Campus
- 4.7km Curro Campus

MEDICAL

- 3.5km Durbanville Mediclinic
- 1.4km Pediatric Doctor
- 2.9km General Practitioner

SHOPPING

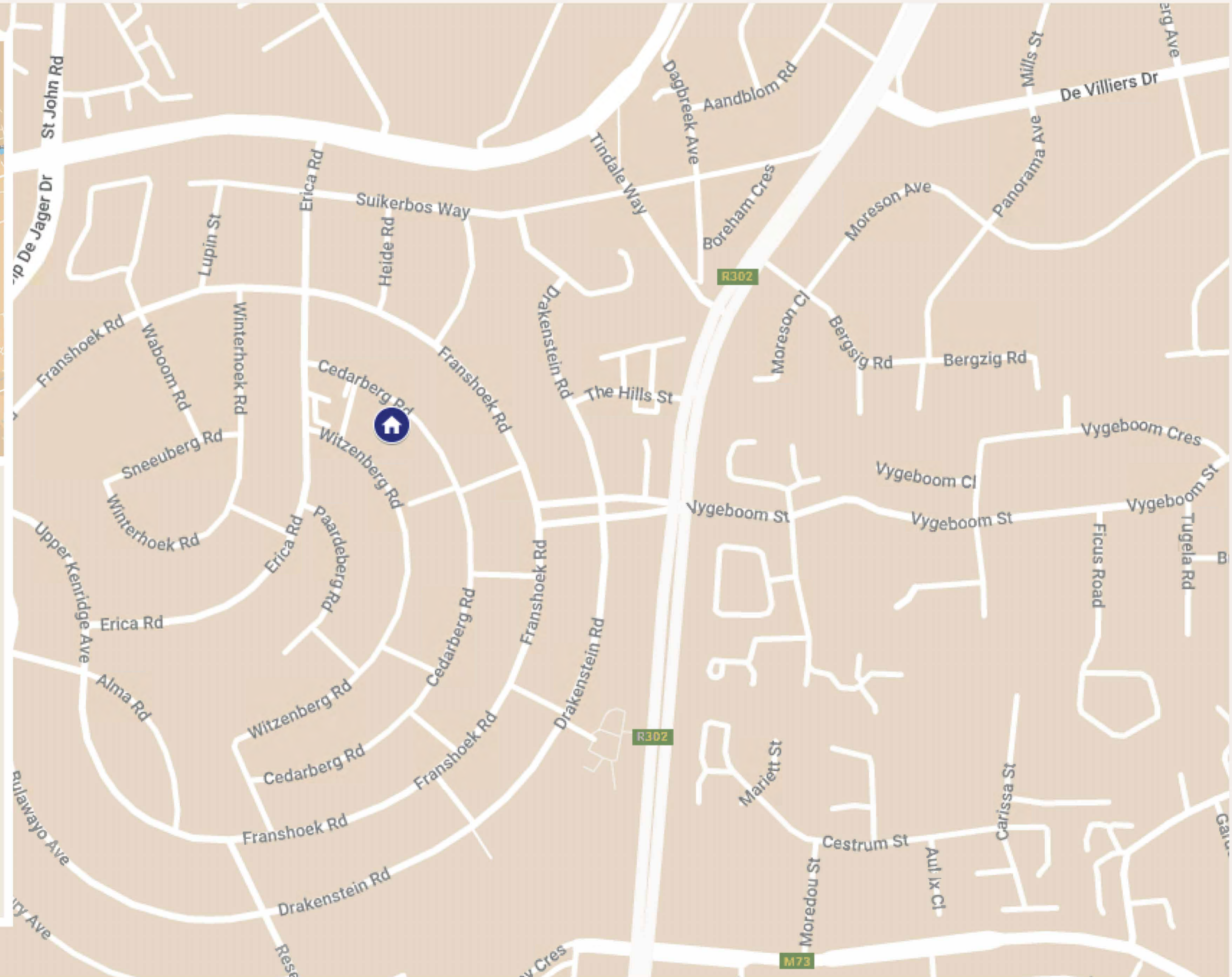
- 2.3km De Ville Centre
- 2.6km The Village Square
- 4.3km Willowbridge
- 3.6km Tyger Valley Centre

LEISURE

- 1.2km Durbanville Nature Reserve
- 4.4km Tygerberg Mountain Bike Club
- 3.0km Durbanville Golf Club

WINE FARMS

- 2.4km Altydgedacht
- 4.3km Bloemendal
- 6.7km Meerendal
- 9.2km Durbanville Hills



All 3D visuals and marketing material are artistic representations for marketing purposes only and subject to design development. Plans, elevations, sections and specifications subject to final adjustments by architect. Areas shown on drawings are measured construction areas and may vary. Window and door quantities, positions, sizes and glazing may need to be adjusted and all are subject to compliance with SANS 204 fenestration calculations. Levels shown on drawings are indicative. All levels to be finalized on site and adjustments to plans and levels shown on marketing material may need to be made to comply with SANS 10400. All furniture, appliances, swimming pools, and vehicles indicative and not included in purchase price. All 3D visuals are shown in a mature landscape indicative for the development, actual hard and soft landscaping proposal implemented for the development may vary.

SITE DEVELOPMENT PLAN



All 3D visuals and marketing material are artistic representations for marketing purposes only and subject to design development. Plans, elevations, sections and specifications subject to final adjustments by architect. Areas shown on drawings are measured construction areas and may vary. Window and door quantities, positions, sizes and glazing may need to be adjusted and all are subject to compliance with SANS 204 fenestration calculations. Levels shown on drawings are indicative. All levels to be finalized on site and adjustments to plans and levels shown on marketing material may need to be made to comply with SANS 10400. All furniture, appliances, swimming pools, and vehicles indicative and not included in purchase price. All 3D visuals are shown in a mature landscape indicative for the development, actual hard and soft landscaping proposal implemented for the development may vary.



HOMESTEAD
PRIVATE MEWS ESTATE

AERIAL PERSPECTIVE



All 3D visuals and marketing material are artistic representations for marketing purposes only and subject to design development. Plans, elevations, sections and specifications subject to final adjustments by architect. Areas shown on drawings are measured construction areas and may vary. Window and door quantities, positions, sizes and glazing may need to be adjusted and all are subject to compliance with SANS 204 fenestration calculations. Levels shown on drawings are indicative. All levels to be finalized on site and adjustments to plans and levels shown on marketing material may need to be made to comply with SANS 10400. All furniture, appliances, swimming pools, and vehicles indicative and not included in purchase price. All 3D visuals are shown in a mature landscape indicative for the development, actual hard and soft landscaping proposal implemented for the development may vary.



HOMESTEAD
PRIVATE MEWS ESTATE

AERIAL PERSPECTIVE



All 3D visuals and marketing material are artistic representations for marketing purposes only and subject to design development. Plans, elevations, sections and specifications subject to final adjustments by architect. Areas shown on drawings are measured construction areas and may vary. Window and door quantities, positions, sizes and glazing may need to be adjusted and all are subject to compliance with SANS 204 fenestration calculations. Levels shown on drawings are indicative. All levels to be finalized on site and adjustments to plans and levels shown on marketing material may need to be made to comply with SANS 10400. All furniture, appliances, swimming pools, and vehicles indicative and not included in purchase price. All 3D visuals are shown in a mature landscape indicative for the development, actual hard and soft landscaping proposal implemented for the development may vary.



HOMESTEAD PRIVATE MEWS ESTATE

HOMESTEAD ONE



3 BED

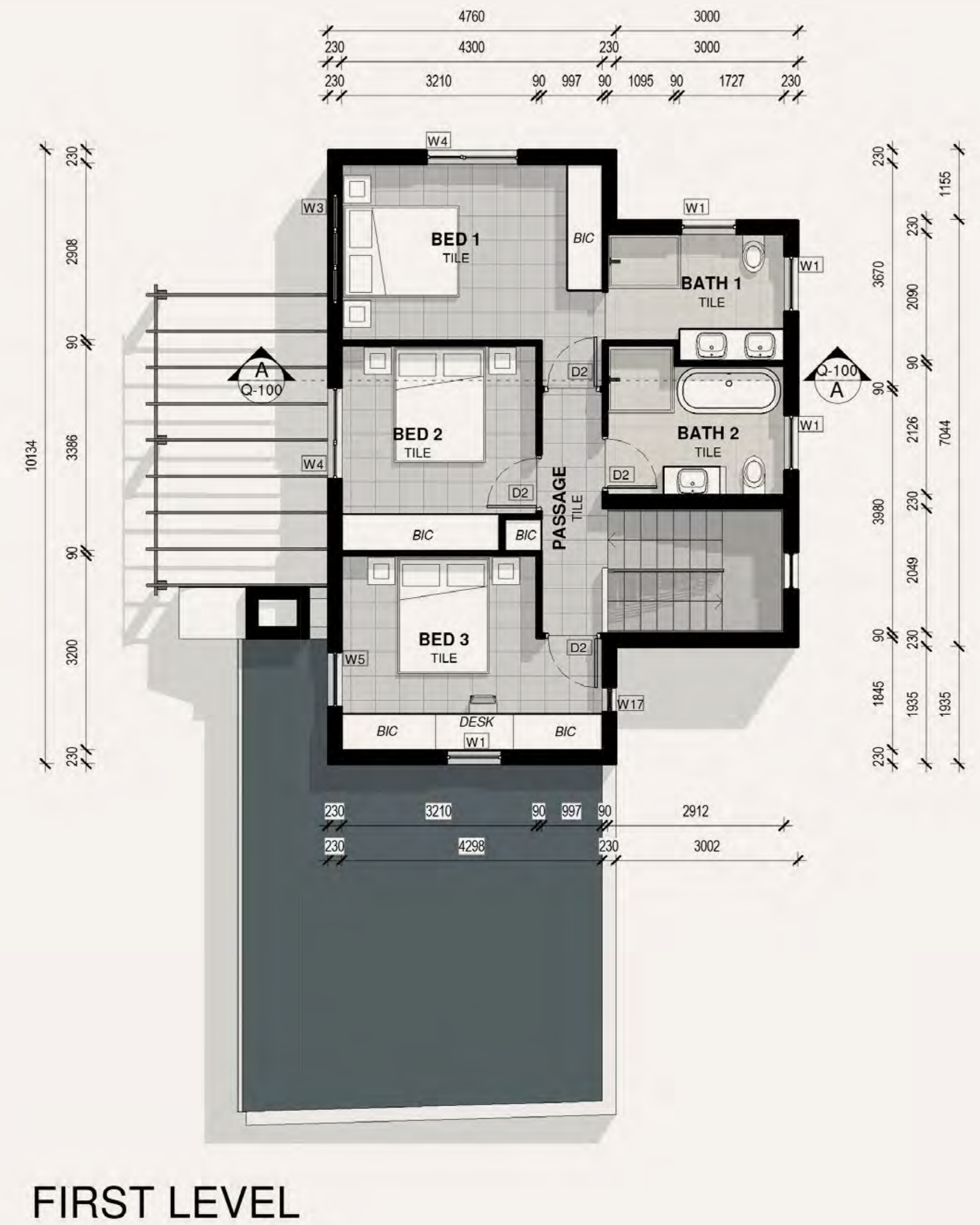


2.5 BATH

Area Schedule

- 1. Ground 72m²
- 2. Garage 37m²
- 3. First 64m²
- 4. Patio 17m²

TOTAL: 190m²



All 3D visuals and marketing material are artistic representations for marketing purposes only and subject to design development. Plans, elevations, sections and specifications subject to final adjustments by architect. Areas shown on drawings are measured construction areas and may vary. Window and door quantities, positions, sizes and glazing may need to be adjusted and all are subject to compliance with SANS 204 fenestration calculations. Levels shown on drawings are indicative. All levels to be finalized on site and adjustments to plans and levels shown on marketing material may need to be made to comply with SANS 10400. All furniture, appliances, swimming pools, and vehicles indicative and not included in purchase price. All 3D visuals are shown in a mature landscape indicative for the development, actual hard and soft landscaping proposal implemented for the development may vary.



HOMESTEAD
PRIVATE MEWS ESTATE

HOMESTEAD TWO



3 BED



2.5 BATH

Area Schedule

1. Ground	80m ²
2. Garage	38m ²
3. First	70m ²
4. Patio	24m ²
TOTAL:	212m²



GROUND LEVEL



FIRST LEVEL

All 3D visuals and marketing material are artistic representations for marketing purposes only and subject to design development. Plans, elevations, sections and specifications subject to final adjustments by architect. Areas shown on drawings are measured construction areas and may vary. Window and door quantities, positions, sizes and glazing may need to be adjusted and all are subject to compliance with SANS 204 fenestration calculations. Levels shown on drawings are indicative. All levels to be finalized on site and adjustments to plans and levels shown on marketing material may need to be made to comply with SANS 10400. All furniture, appliances, swimming pools, and vehicles indicative and not included in purchase price. All 3D visuals are shown in a mature landscape indicative for the development, actual hard and soft landscaping proposal implemented for the development may vary.



HOMESTEAD
PRIVATE MEWS ESTATE

HOMESTEAD THREE



3 BED



2.5 BATH

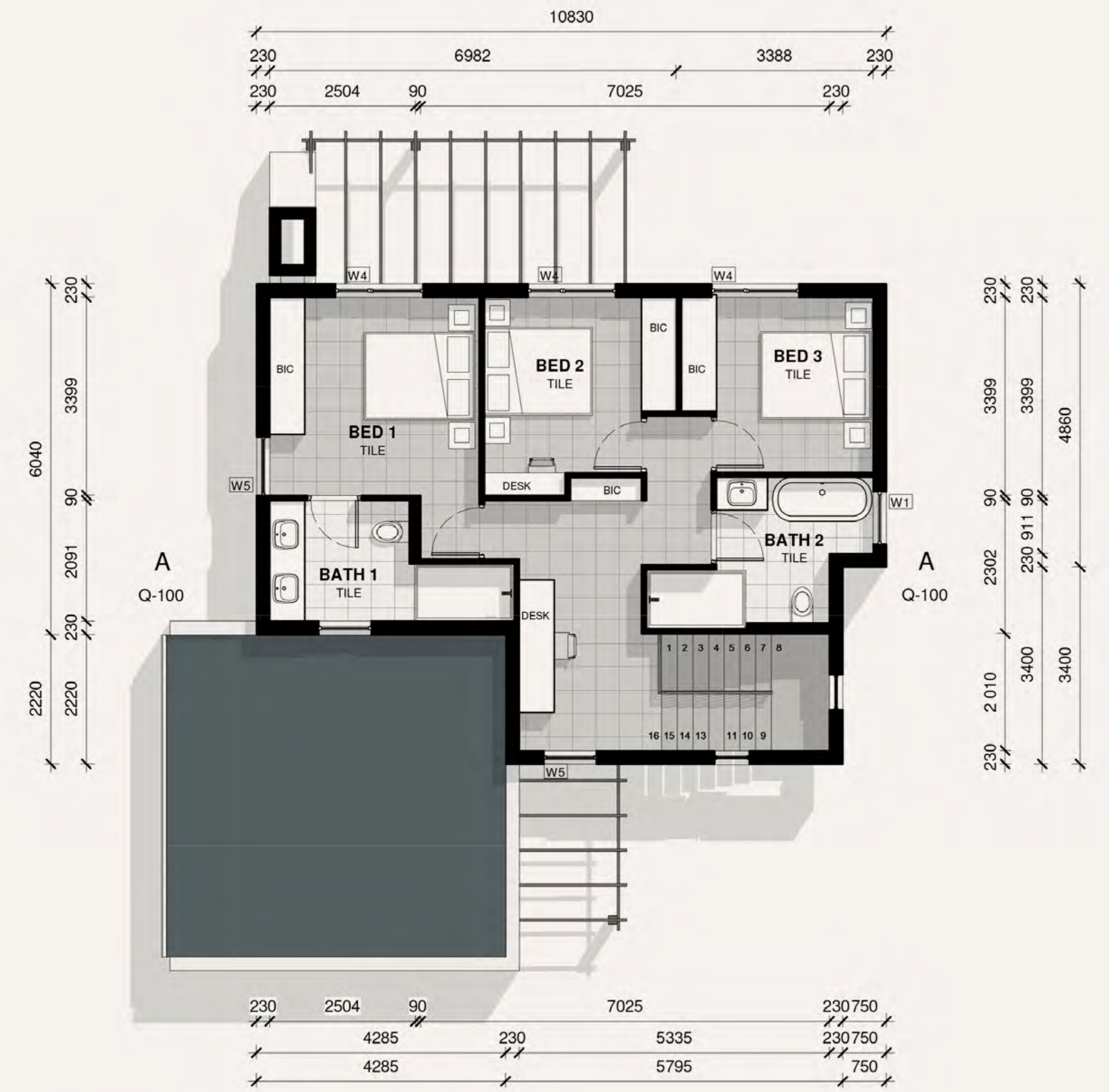
Area Schedule

1. Ground	71m ²
2. Garage	41m ²
3. First	71m ²
4. Patio	14m ²

TOTAL: 197m²



GROUND LEVEL



FIRST LEVEL

All 3D visuals and marketing material are artistic representations for marketing purposes only and subject to design development. Plans, elevations, sections and specifications subject to final adjustments by architect. Areas shown on drawings are measured construction areas and may vary. Window and door quantities, positions, sizes and glazing may need to be adjusted and all are subject to compliance with SANS 204 fenestration calculations. Levels shown on drawings are indicative. All levels to be finalized on site and adjustments to plans and levels shown on marketing material may need to be made to comply with SANS 10400. All furniture, appliances, swimming pools, and vehicles indicative and not included in purchase price. All 3D visuals are shown in a mature landscape indicative for the development, actual hard and soft landscaping proposal implemented for the development may vary.

UPGRADED INTERIOR OPTION



All 3D visuals and marketing material are artistic representations for marketing purposes only and subject to design development. Plans, elevations, sections and specifications subject to final adjustments by architect. Areas shown on drawings are measured construction areas and may vary. Window and door quantities, positions, sizes and glazing may need to be adjusted and all are subject to compliance with SANS 204 fenestration calculations. Levels shown on drawings are indicative. All levels to be finalized on site and adjustments to plans and levels shown on marketing material may need to be made to comply with SANS 10400. All furniture, appliances, swimming pools, and vehicles indicative and not included in purchase price. All 3D visuals are shown in a mature landscape indicative for the development, actual hard and soft landscaping proposal implemented for the development may vary.



HOMESTEAD PRIVATE MEWS ESTATE

HOMESTEAD FOUR



3 BED



2.5 BATH

Area Schedule

1. Ground	70m ²
2. Garage	39m ²
4. Patio	12m ²
3. First	72m ²
5. Balcony	12m ²

TOTAL: 205m²



GROUND LEVEL



FIRST LEVEL

All 3D visuals and marketing material are artistic representations for marketing purposes only and subject to design development. Plans, elevations, sections and specifications subject to final adjustments by architect. Areas shown on drawings are measured construction areas and may vary. Window and door quantities, positions, sizes and glazing may need to be adjusted and all are subject to compliance with SANS 204 fenestration calculations. Levels shown on drawings are indicative. All levels to be finalized on site and adjustments to plans and levels shown on marketing material may need to be made to comply with SANS 10400. All furniture, appliances, swimming pools, and vehicles indicative and not included in purchase price. All 3D visuals are shown in a mature landscape indicative for the development, actual hard and soft landscaping proposal implemented for the development may vary.



HOMESTEAD PRIVATE MEWS ESTATE

HOMESTEAD FIVE



3 BED



3.5 BATH

Area Schedule

1. Ground	75m ²
2. Garage	41m ²
3. First	90m ²
4. Patio	15m ²

TOTAL: 220m²



All 3D visuals and marketing material are artistic representations for marketing purposes only and subject to design development. Plans, elevations, sections and specifications subject to final adjustments by architect. Areas shown on drawings are measured construction areas and may vary. Window and door quantities, positions, sizes and glazing may need to be adjusted and all are subject to compliance with SANS 204 fenestration calculations. Levels shown on drawings are indicative. All levels to be finalized on site and adjustments to plans and levels shown on marketing material may need to be made to comply with SANS 10400. All furniture, appliances, swimming pools, and vehicles indicative and not included in purchase price. All 3D visuals are shown in a mature landscape indicative for the development, actual hard and soft landscaping proposal implemented for the development may vary.



HOMESTEAD
PRIVATE MEWS ESTATE

HOMESTEAD SIX



3 BED



3.5 BATH

Area Schedule

1. Ground	70m ²
2. Garage	36m ²
3. First	96m ²
4. Patio	13m ²
5. Balcony	5m ²

TOTAL: 220m²



All 3D visuals and marketing material are artistic representations for marketing purposes only and subject to design development. Plans, elevations, sections and specifications subject to final adjustments by architect. Areas shown on drawings are measured construction areas and may vary. Window and door quantities, positions, sizes and glazing may need to be adjusted and all are subject to compliance with SANS 204 fenestration calculations. Levels shown on drawings are indicative. All levels to be finalized on site and adjustments to plans and levels shown on marketing material may need to be made to comply with SANS 10400. All furniture, appliances, swimming pools, and vehicles indicative and not included in purchase price. All 3D visuals are shown in a mature landscape indicative for the development, actual hard and soft landscaping proposal implemented for the development may vary.



HOMESTEAD

PRIVATE **MEWS** ESTATE

Andre Burger

andre@revo.co.za

+27 72 600 4050



PROSPEKT

Property Development



REVO
PROPERTY